

Q-1380



Beginner

Sevilla Shots "Modern Quilt"

27 x 34 1/2" (68,5 x 88 cm)



FABRIC REQUIREMENT:

Fabrics from series „Sevilla Shots“, 56" (142 cm) wide, Plain, 59" (150 cm) wide and "Quilters Shadow", 44" (112 cm) wide.

OTHER SUPPLIES:

Batting: Thin, 35 1/2" (90 cm) wide 30" (75 cm)

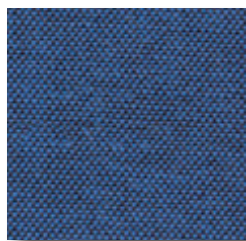
In addition: Matching sewing and quilting thread.

The Basics: Whenever this symbol ➡ appears in the directions, you will find a detailed explanation for "Sewing Basics" in the website www.stofffabrics.com under the Gallery.

CUTTING ➡:

1/4" (0,75 cm) seam allowance is included.

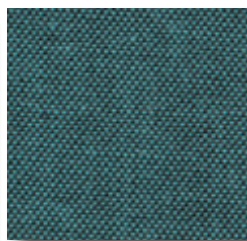
Fabric A:	2 Strips	5 1/2 x 25 1/2" (13,5 x 65 cm)
Fabric B:	2 Strips	3 1/2 x 27 1/2" (9 x 70 cm)
Fabric F:	12 Squares	2 x 2" (5 x 5 cm)
Fabric G:	17 Strips	2 x 7" (5 x 17,5 cm)
Fabric G:	6 Strips	1 x 7" (2,5 x 17,5 cm)
Fabric G:	3 Strips	2 1/2 x 56" (6,5 x 140 cm) (Binding)



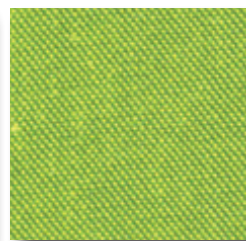
A 2758-006
10" (25 cm)



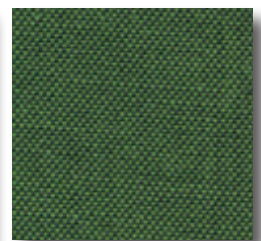
B 2758-016
6" (15 cm)



C 2758-007
6" (15 cm)



D 2758-008
6" (15 cm)



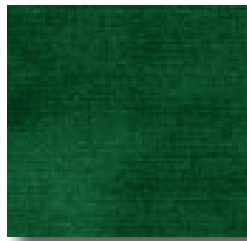
E 2758-018
15 cm



F 2758-014
3" (7 cm)



G 12-999
22" (55 cm)



H 4516-809
30" (75 cm)

PAPER PIECING BLOCK

NOTE: The template design is reversed: sewn result is like the image. On thin paper draw 6 paper piecing blocks according to the templates below. Sew the blocks following the order of the numbers. Trim the blocks.

Join left and right side of paper piecing block with a small strip in fabric G.

SEWING OF QUILT TOP: Seam allowance is 1/4" (0,75 cm).

Firstly join blocks 3, 4 & 5 with strips in fabric G, starting and finishing with a G strip. Repeat for the second row made of blocks 2, 1 & 4. Then join 3 strips in fabric G with squares in fabric F. Join these 5 rows together to create the center piece.

Join strips in fabric A to top and bottom of the center piece. Then join strips in fabric B to each side of the center piece.

From the leftover of fabric strips from the paper piecing blocks, cut segments of 15 cm and sew these together until 27 1/2" (70 cm) is reached. Cut this striped strip into 2 narrower strips of 2 2/1" (6 cm) and join one strip to the left side and the other strip to the right side of the center piece.

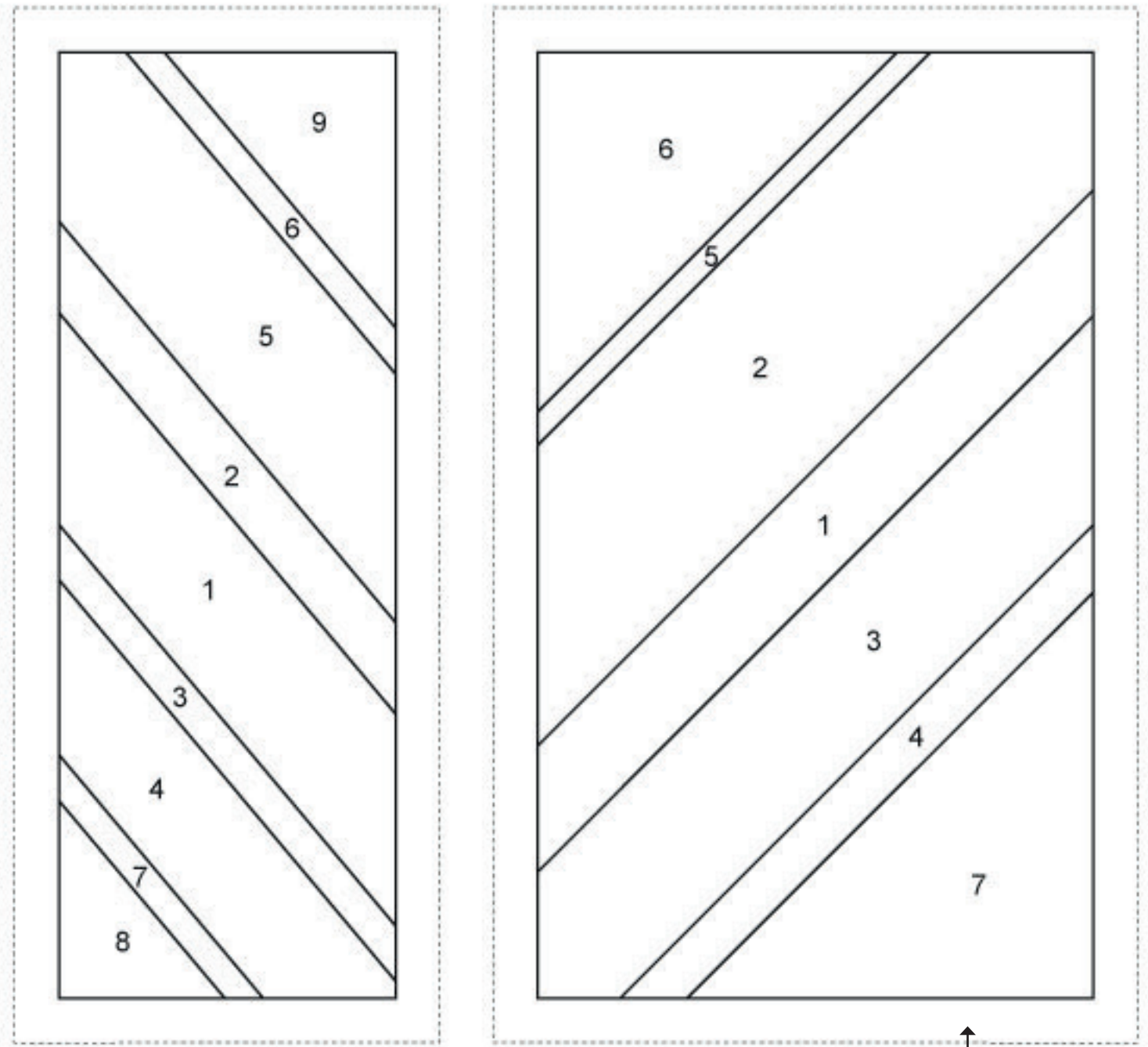
QUILTING AND BINDING:

Layer top, batting and backing in fabric H and baste the pieces. Quilt as you prefer by hand or by machine ➡. We suggest to quilt in the seams of the center piece. Echo the lines from the paper piecing block for quilting in fabric A at top and at bottom of center piece. We also suggest to quilt parallel lines in the pieces of fabric B. Sew hanging sleeve in fabric H and place under top binding in fabric G ➡.

We wish you much success and pleasure with our fabrics and pattern.
Your Team from STOF fabrics.

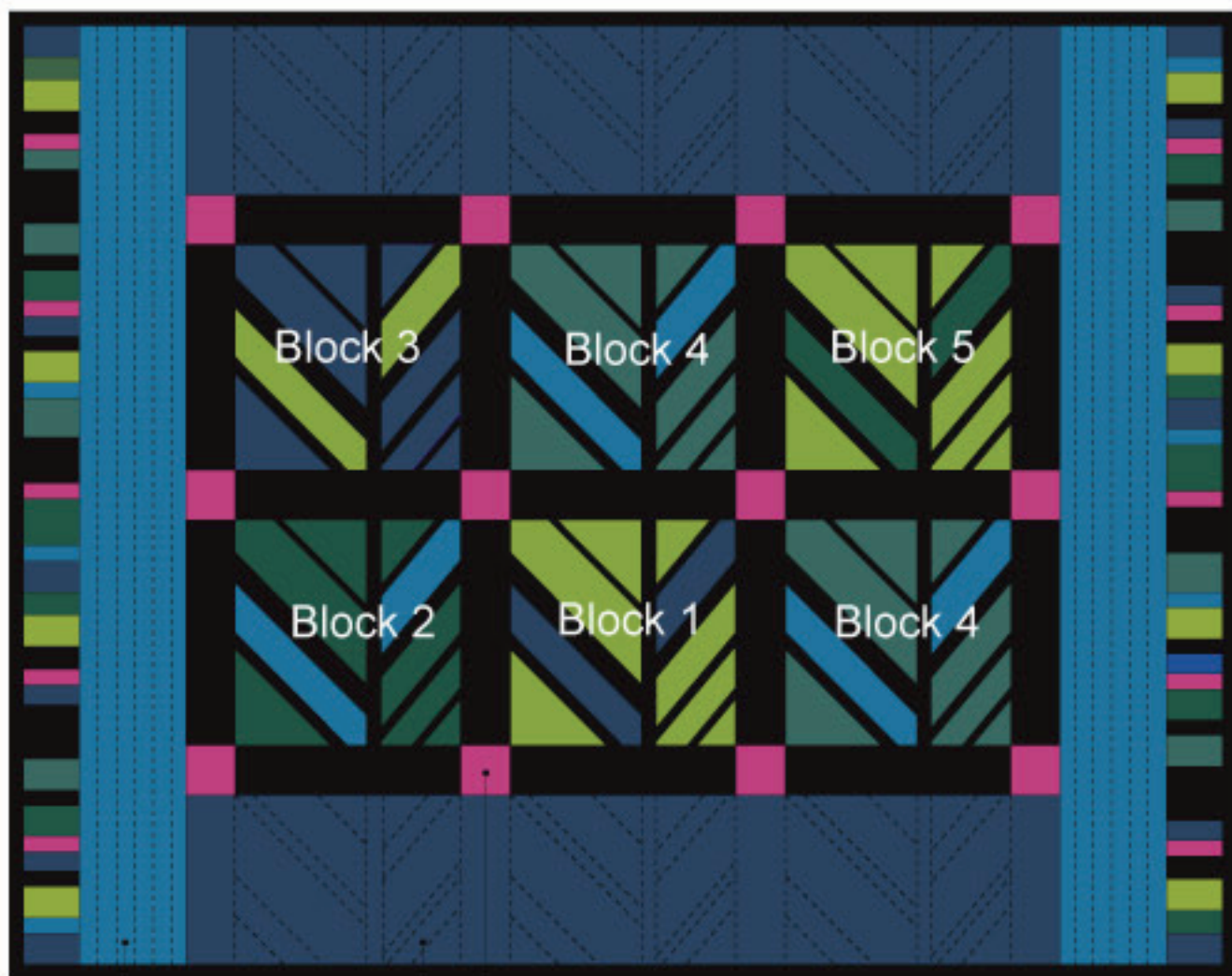
TEMPLATE

Paper Piecing Block



Follow the numbers when sewing

↑
Seam allowance



B

A

P

Block 1 1x



A

D

Block 2 1x



B

E

Block 3 1x



A

D

Block 4 2x



B

C

Block 5 1x



D

E

- A 2758-006 dark blue
- B 2758-016 blue
- C 2758-007 petrol
- D 2758-008 lime
- E 2758-018 dark green
- F 2758-014 pink

- G 12-999 black
- H 4516-809 dark green